







B. Wylee

4/27/2017

Worklist: 1696 *may also be listed as 1697, or 1698*

<u>LAB CASE</u>	<u>ITEM</u>	<u>TASK ID</u>	<u>DESCRIPTION</u>	
C2017-0659	2	83294	AM 3 Urine Carboxy-THC	
C2017-0679	1	83295	AM 3 Urine Carboxy-THC	
C2017-0699	1	83296	AM 3 Urine Carboxy-THC	
C2017-0753	1	83297	AM 3 Urine Carboxy-THC	
M2017-1327	1	83298	AM 3 Urine Carboxy-THC	
P2017-0248	4	83299	AM 3 Urine Carboxy-THC	



2.4.4 Carboxy-THC QC Calculations

Run Date: April 25-26 2017

Case Calculations:

Lab Case #: BRC3 68430

EIC Ion 371 Corr. Area: 476179

EIC Ion 473 Corr. Area: 232776

EIC Ion 488 Corr. Area: 144544

473:371 Ratio: 0.489

488:371 Ratio: 0.304

Quality Control Calculations:

Retention Time acceptable range: 4.681 to 4.837

	<i>1st ctrl</i>	<i>2nd ctrl</i>
EIC Ion 371 Corr. Area:	<u>2245226</u>	<u>2247041</u>
EIC Ion 473 Corr. Area:	<u>1063913</u>	<u>1067212</u>
EIC Ion 488 Corr. Area:	<u>676545</u>	<u>632588</u>

Approximate minimum corrected area of 371 ion: ~ **449045**

Ratio of 473:371			
<i>1st ctrl</i>	<u>0.474</u>	<i>2nd ctrl</i>	<u>0.475</u>
	avg.		<u>0.474</u>

Accepted Range
(+/- 20%) 0.380 - 0.569

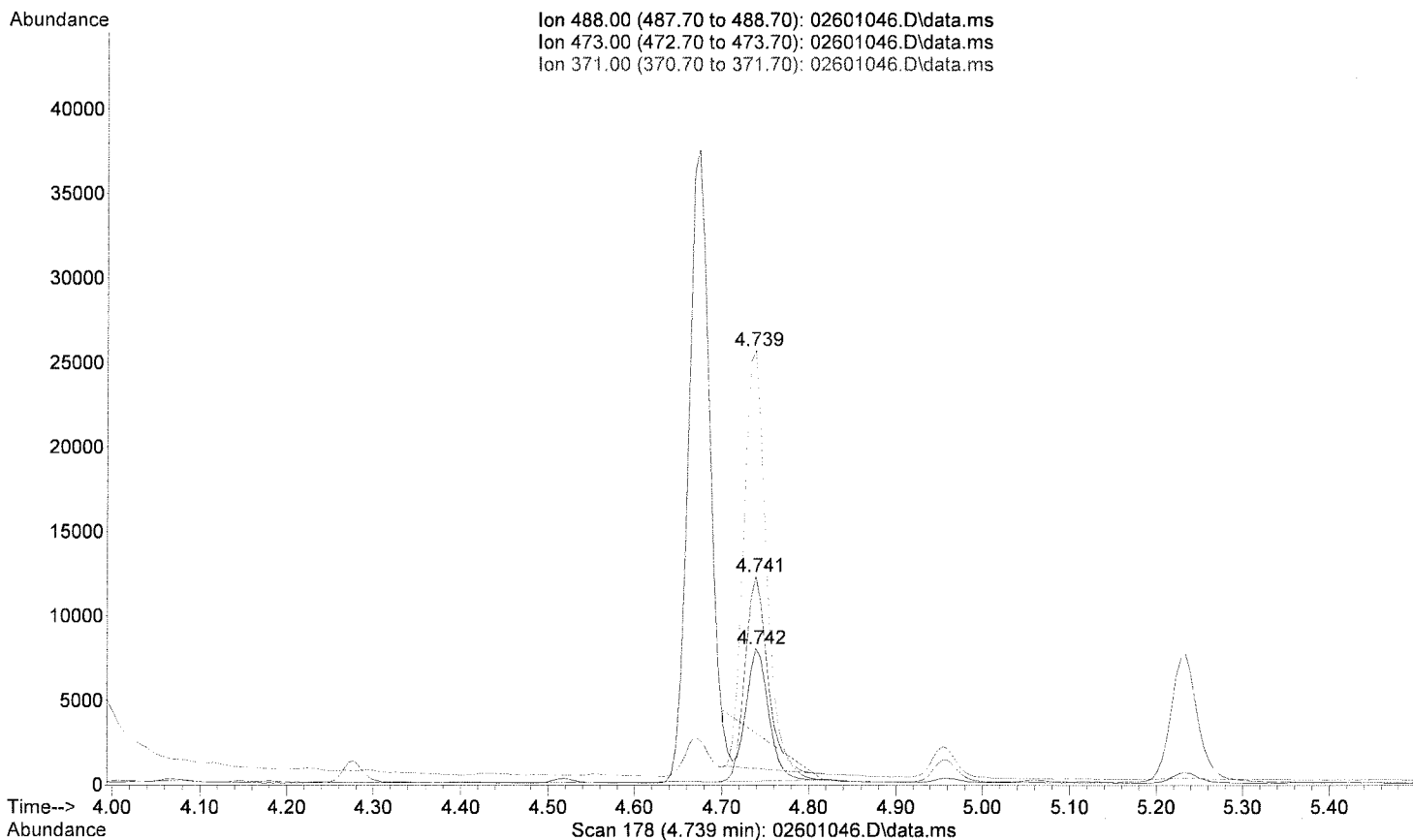
Ratio of 488:371			
<i>1st ctrl</i>	<u>0.301</u>	<i>2nd ctrl</i>	<u>0.282</u>
	avg		<u>0.291</u>

Accepted Range
(+/- 20%): 0.233 - 0.350

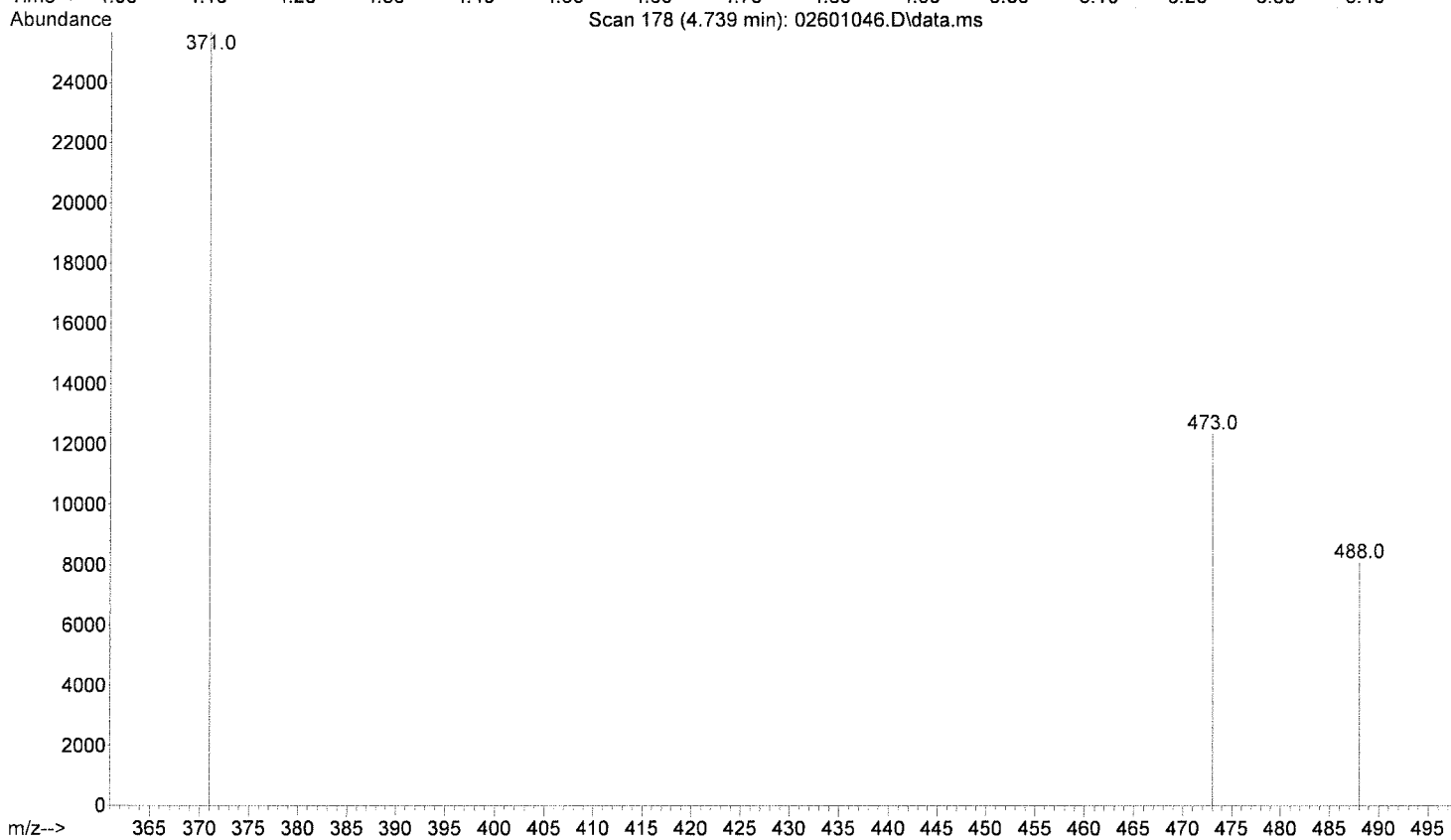
Carboxy-calculation sheet
Revision 0 effective date 10/23/13
Issuing authority: Quality Manager



File :E:\02601046.D
Operator : Instrument 65198
Acquired : 26 Apr 2017 06:22 using AcqMethod cthc 101415.M
Instrument : Instrument # 65198- Tox Cd'A
Sample Name: brc3 control
Misc Info : lot 68430; am 3
Vial Number: 26



Ion 488.00 (487.70 to 488.70): 02601046.D\data.ms
Ion 473.00 (472.70 to 473.70): 02601046.D\data.ms
Ion 371.00 (370.70 to 371.70): 02601046.D\data.ms



Area Percent Report

Data Path : E:\
 Data File : 02601046.D
 Acq On : 26 Apr 2017 06:22
 Operator : Instrument 65198
 Sample : brc3 control
 Misc : lot 68430; am 3
 ALS Vial : 26 Sample Multiplier: 1

Integration Parameters: events.e
 Integrator: ChemStation

Method : C:\msdchem\1\METHODS\DEFAULT.M
 Title :

Signal : EIC Ion 488.00 (487.70 to 488.70): 02601046.D\data.ms

peak #	R.T. min	first scan	max scan	last scan	PK TY	peak height	corr. area	corr. % max.	% of total
1	4.675	157	166	174	PV	37166	645993	100.00%	81.716%
2	4.742	174	179	193	VBA	7741	<u>144544</u>	22.38%	18.284%

Sum of corrected areas: 790537

Signal : EIC Ion 473.00 (472.70 to 473.70): 02601046.D\data.ms

peak #	R.T. min	first scan	max scan	last scan	PK TY	peak height	corr. area	corr. % max.	% of total
1	4.741	169	178	193	PBA	11922	<u>232776</u>	100.00%	100.000%

Sum of corrected areas: 232776

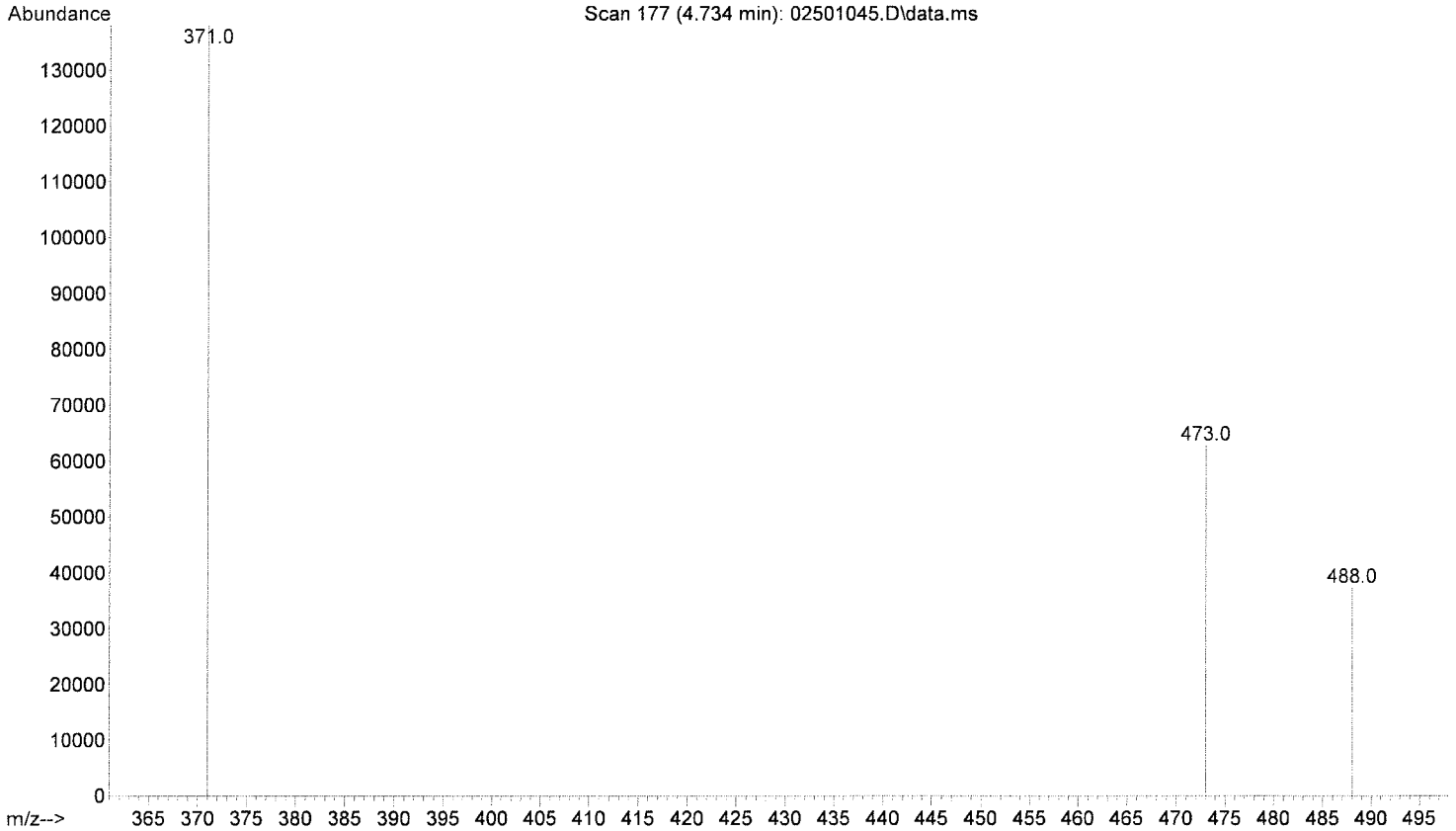
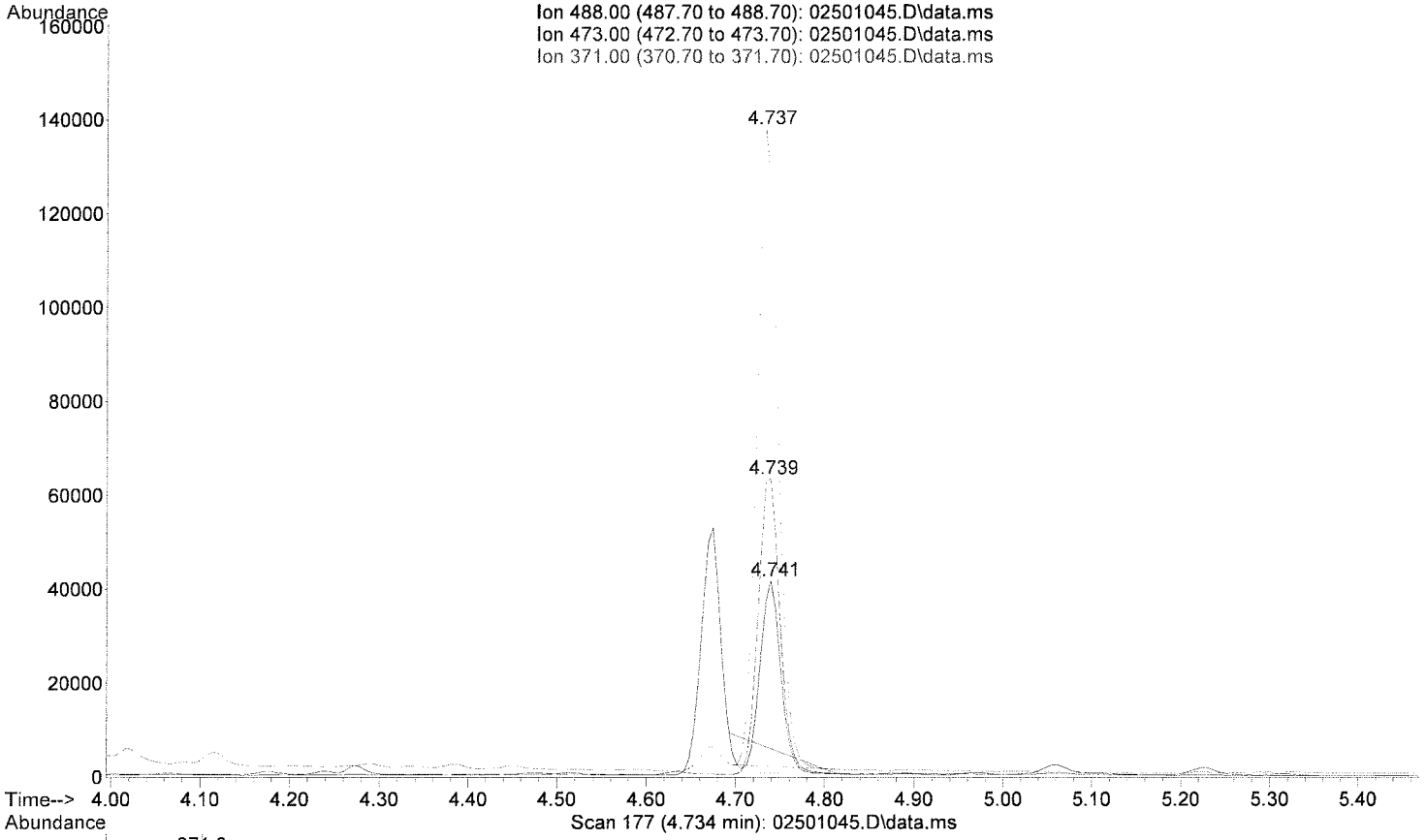
Signal : EIC Ion 371.00 (370.70 to 371.70): 02601046.D\data.ms

peak #	R.T. min	first scan	max scan	last scan	PK TY	peak height	corr. area	corr. % max.	% of total
1	4.672	159	166	171	PV	2321	43075	9.22%	8.442%
2	4.739	171	178	193	VBA	25094	<u>467179</u>	100.00%	91.558%

Sum of corrected areas: 510254

DEFAULT.M Wed Apr 26 16:38:35 2017

File :E:\02501045.D
Operator : Instrument 65198
Acquired : 26 Apr 2017 06:13 using AcqMethod cthc 101415.M
Instrument : Instrument # 65198- Tox Cd'A
Sample Name: positive control
Misc Info : FE03121501 in neg lot 31517; am 3
Vial Number: 25



Area Percent Report

Data Path : E:\
 Data File : 02501045.D
 Acq On : 26 Apr 2017 06:13
 Operator : Instrument 65198
 Sample : positive control
 Misc : FE03121501 in neg lot 31517; am 3
 ALS Vial : 25 Sample Multiplier: 1

Integration Parameters: events.e
 Integrator: ChemStation

Method : C:\msdchem\1\METHODS\DEFAULT.M
 Title :

Signal : EIC Ion 488.00 (487.70 to 488.70): 02501045.D\data.ms

peak #	R.T. min	first scan	max scan	last scan	PK TY	peak height	corr. area	corr. % max.	% of total
1	4.675	154	166	172	PV	51732	822823	100.00%	54.878%
2	4.741	172	178	193	VBA	40430	<u>676545</u>	82.22%	45.122%

Sum of corrected areas: 1499368

Signal : EIC Ion 473.00 (472.70 to 473.70): 02501045.D\data.ms

peak #	R.T. min	first scan	max scan	last scan	PK TY	peak height	corr. area	corr. % max.	% of total
1	4.637	150	159	170	BV	627	10993	1.03%	1.023%
2	4.739	170	178	193	PBA	63333	<u>1063913</u>	100.00%	98.977%

Sum of corrected areas: 1074906

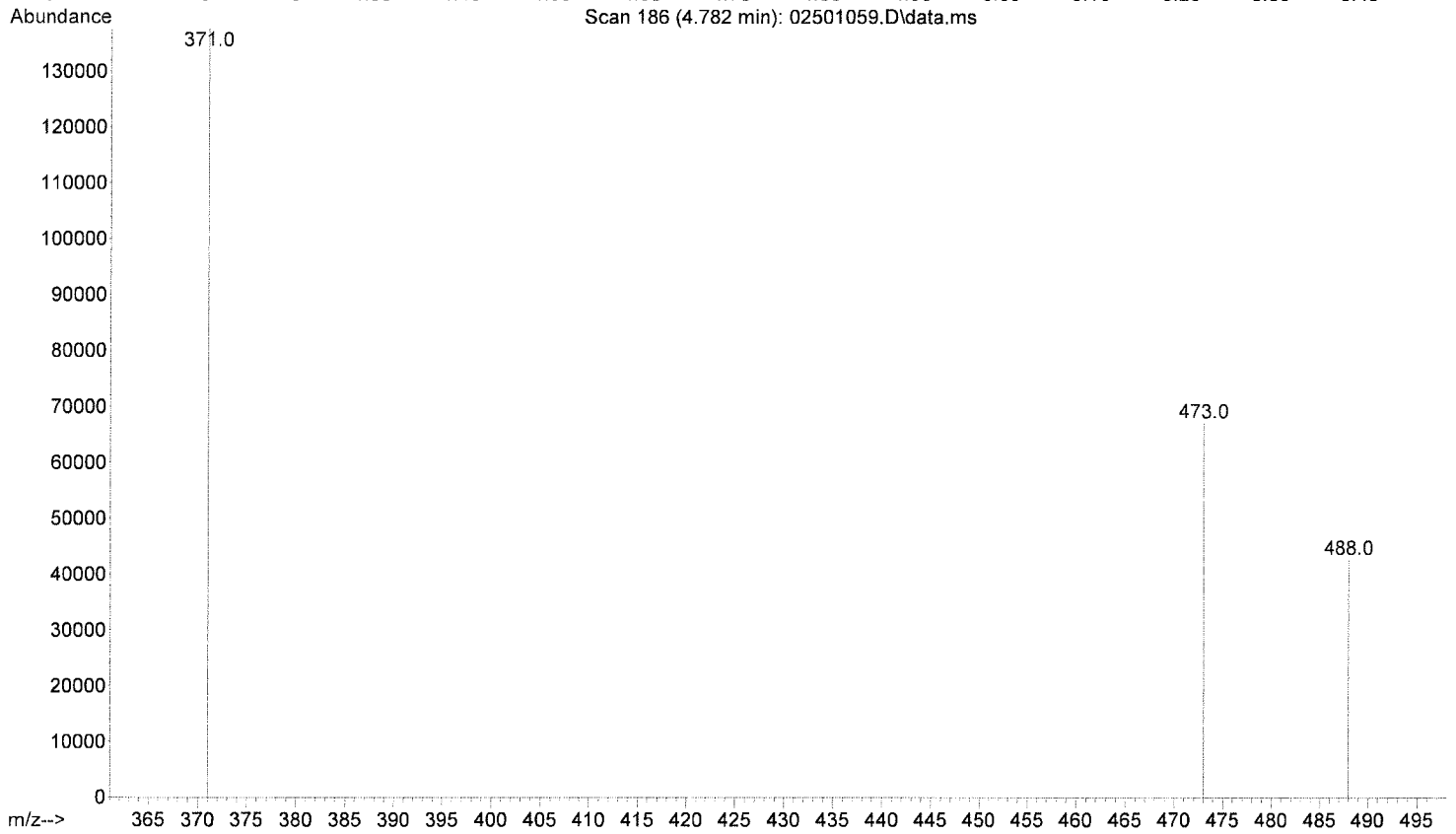
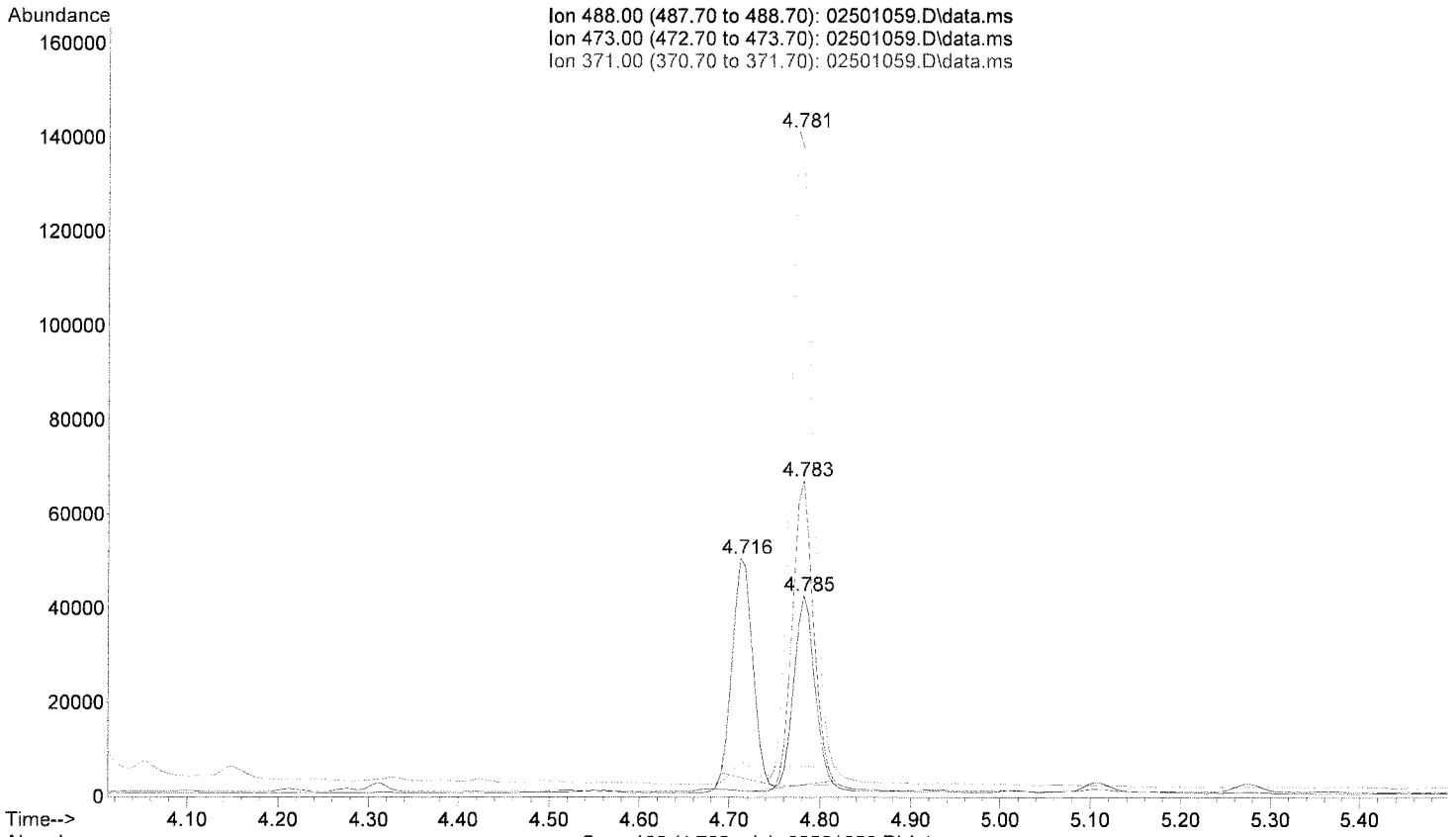
Signal : EIC Ion 371.00 (370.70 to 371.70): 02501045.D\data.ms

peak #	R.T. min	first scan	max scan	last scan	PK TY	peak height	corr. area	corr. % max.	% of total
1	4.675	158	166	171	PV	5045	88517	3.94%	3.793%
2	4.737	171	178	193	VBA	134209	<u>2245226</u>	100.00%	96.207%

Sum of corrected areas: 2333742

DEFAULT.M Wed Apr 26 16:40:18 2017

File :E:\02501059.D
Operator : Instrument 65198
Acquired : 26 Apr 2017 08:23 using AcqMethod cthc 101415.M
Instrument : Instrument # 65198- Tox Cd'A
Sample Name: positive control
Misc Info : FE03121501 in neg lot 31517; am 3
Vial Number: 25



Area Percent Report

Data Path : E:\
 Data File : 02501059.D
 Acq On : 26 Apr 2017 08:23
 Operator : Instrument 65198
 Sample : positive control
 Misc : FE03121501 in neg lot 31517; am 3
 ALS Vial : 25 Sample Multiplier: 1

Integration Parameters: events.e
 Integrator: ChemStation

Method : C:\msdchem\1\METHODS\DEFAULT.M
 Title :

Signal : EIC Ion 488.00 (487.70 to 488.70): 02501059.D\data.ms

peak #	R.T. min	first scan	max scan	last scan	PK TY	peak height	corr. area	corr. % max.	% of total
1	4.557	134	144	151	BV 2	581	11712	1.51%	0.824%
2	4.716	161	174	180	PV	48923	777264	100.00%	54.677%
3	4.785	180	187	193	VBA2	39376	<u>632588</u>	81.39%	44.499%

Sum of corrected areas: 1421564

Signal : EIC Ion 473.00 (472.70 to 473.70): 02501059.D\data.ms

peak #	R.T. min	first scan	max scan	last scan	PK TY	peak height	corr. area	corr. % max.	% of total
1	4.681	157	167	178	PV	615	15260	1.43%	1.410%
2	4.783	178	186	193	PBA2	64453	<u>1067212</u>	100.00%	98.590%

Sum of corrected areas: 1082473

Signal : EIC Ion 371.00 (370.70 to 371.70): 02501059.D\data.ms

peak #	R.T. min	first scan	max scan	last scan	PK TY	peak height	corr. area	corr. % max.	% of total
1	4.717	167	174	179	PV	4130	67874	3.02%	2.932%
2	4.781	179	186	193	VBA2	136690	<u>2247041</u>	100.00%	97.068%

Sum of corrected areas: 2314915

DEFAULT.M Wed Apr 26 16:40:42 2017



File :E:\02401044.D
Operator : Instrument 65198
Acquired : 26 Apr 2017 06:03 using AcqMethod cthc 101415.M
Instrument : Instrument # 65198- Tox Cd'A
Sample Name: negative control
Misc Info : lot 31517; am 3
Vial Number: 24

